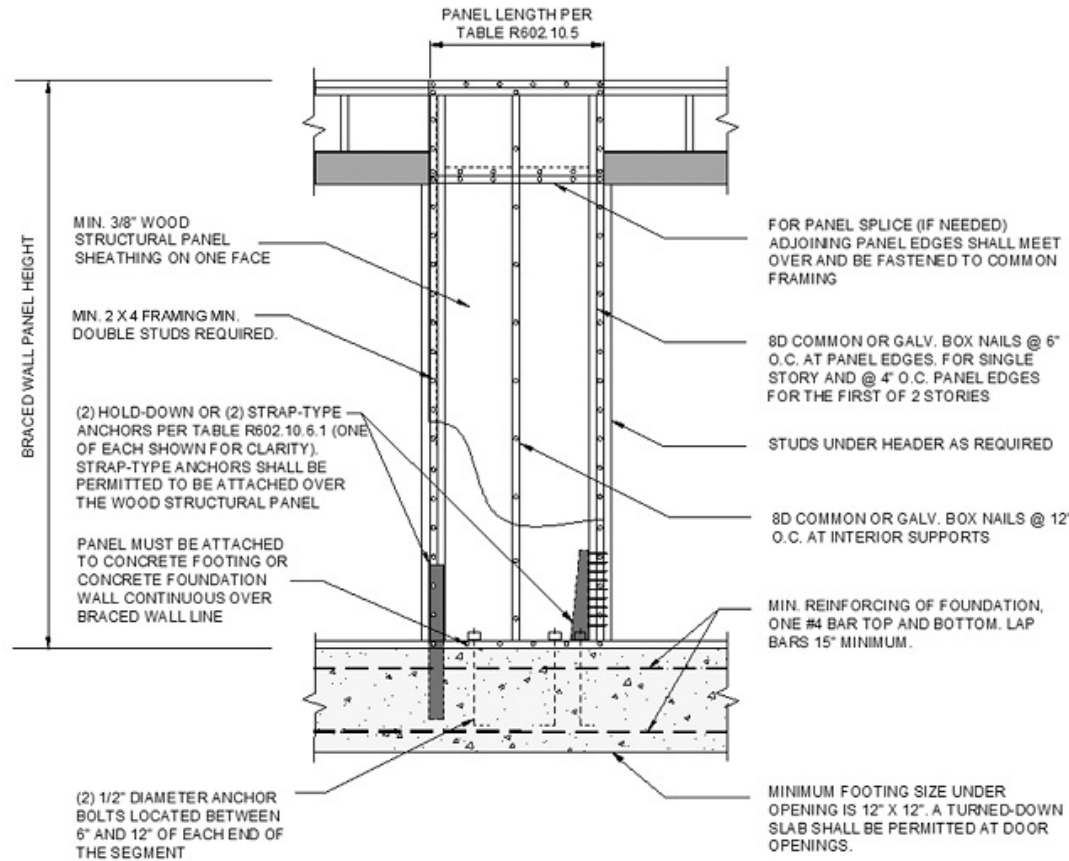


ABW - Alternate Braced Wall panels:

- 8' wall height = minimum 28" ABW width
- 9' wall height = minimum 32" ABW width
- 10' wall height = minimum 34" ABW width

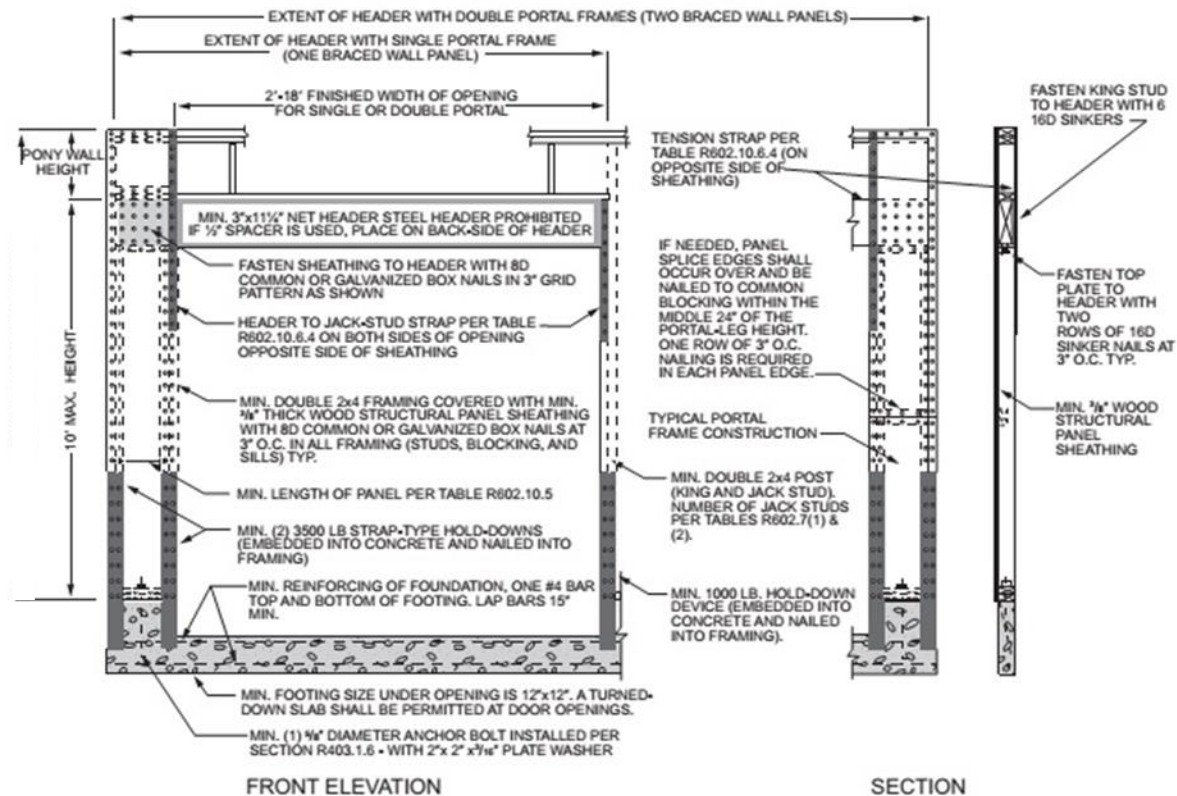


For SI: 1 inch = 25.4 mm.

FIGURE R602.10.6.1 METHOD ABW—ALTERNATE BRACED WALL PANEL

PFH - Portal Frame panel with hold downs:

- Minimum width of panel 16".



For SI: 1 inch = 25.4 mm, 1 foot = 304.8 mm.

FIGURE R602.10.6.2 METHOD PFH—PORTAL FRAME WITH HOLD-DOWNS