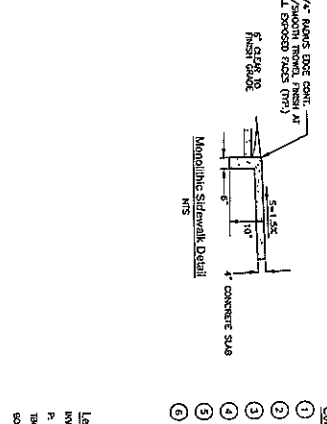
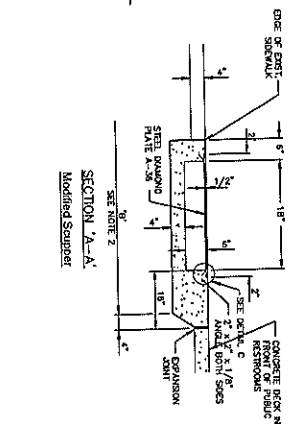
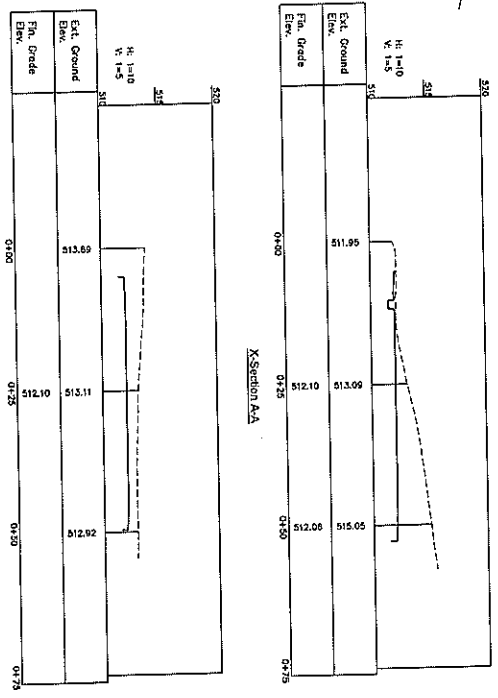
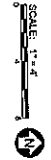
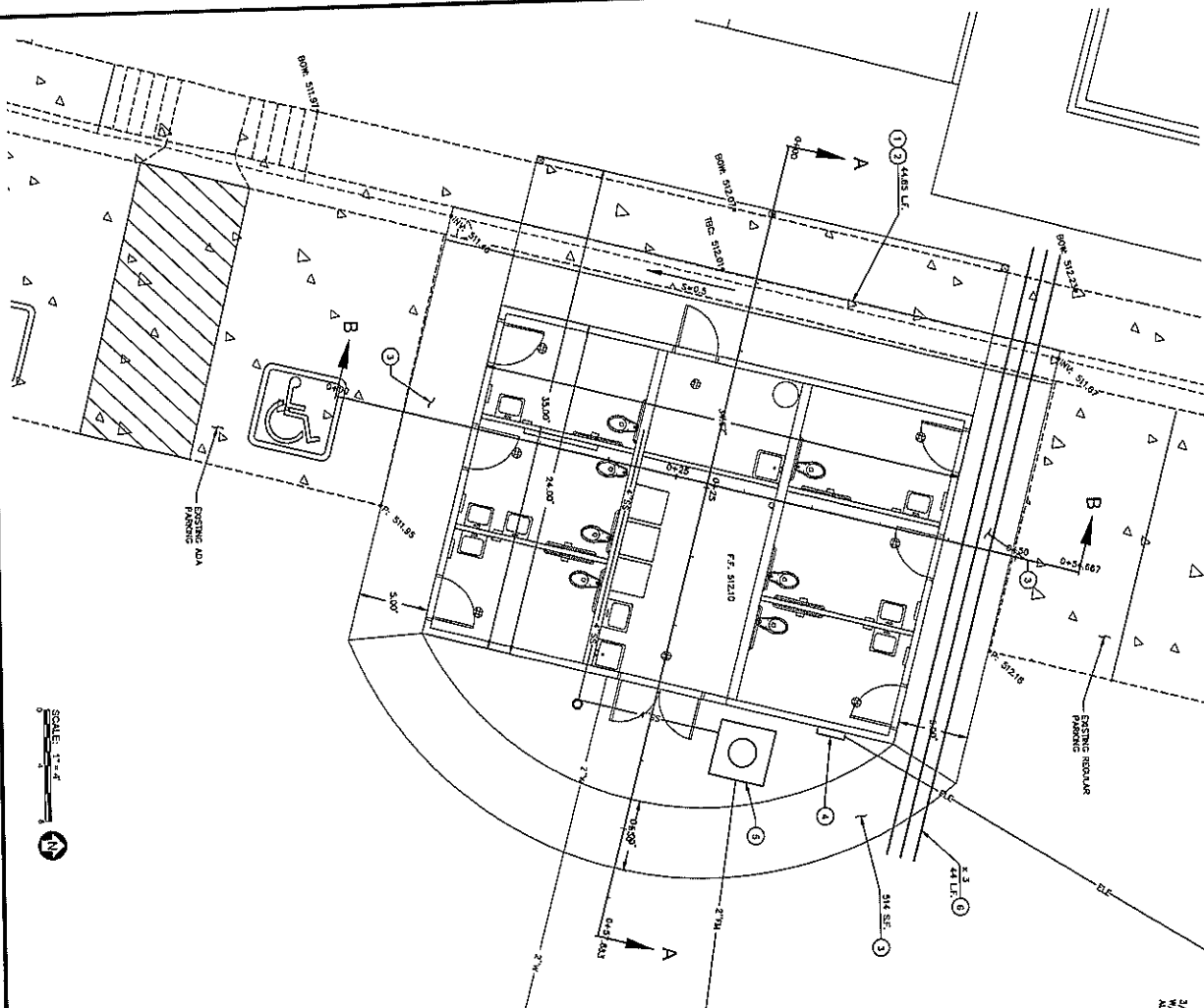


Community Park Restroom Site Plan



- Construction Notes**
- REMOVE EXISTING CURB & GUTTER
 - INSTALL SCURPER PER P.L.C. STD. DET. BOX, WOODEN PER DETAIL THIS SHEET.
 - INSTALL MONOLITHIC CURB AND SIDEWALK PER DETAIL THIS SHEET.
 - INSTALL ELECTRICAL PANEL.
 - INSTALL SWIMMER STEPS LEFT SWIMMER.
 - INSTALL 5" PVC DRAINAGE.
- Legend**
- FIN. INVERT AT FLOWLINE ELEV.
 - P. PAVEMENT ELEV.
 - TBC. TOP BACK CURB ELEV.
 - SDM. BACK OF WALK ELEV.
- Notes**
- (---) INDICATES ORIENTATION OF FLOW.
 - PANT STEEL, ACCORDING TO SECTION 706.
 - CONCRETE SHALL BE CLASS. B PER SECT. 725.
 - AND REINFORCED PER SECT. 725.

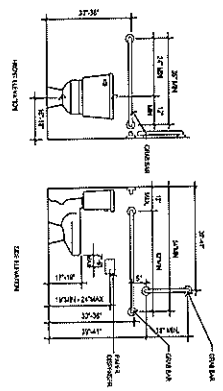
		Community Park Restroom Anderson - Nelson, Inc. Engineering - Surveying - Site Grading Plans - Subdivision Development - Hydrology Construction Management - Computer Services	4143 N. 12th St., Suite 200 Phoenix, Arizona 85014 (602) 273-1850 Bulhead City, AZ (928) 704-4677
DESIGNED: [Blank] DRAWN: [Blank] CHECKED: [Blank] DATE: 01-29-23	REVISIONS: [Blank]	DATE: [Blank] BY: [Blank]	Site Plan



PROJECT NAME:
COMMUNITY PARK RESTROOM
 1251 HWY 95, BULLHEAD CITY, ARIZONA 86442 APN: 214-01-011

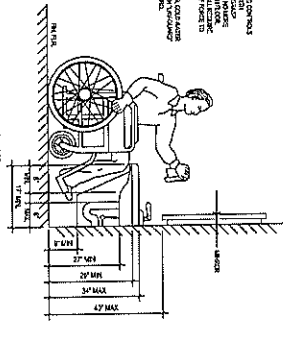
DATE	DESCRIPTION
12/31/2023	ISSUED FOR PERMITS
12/31/2023	ISSUED FOR CONSTRUCTION
12/31/2023	ISSUED FOR RECORD

SHEET NO.	PROJECT NO.
A0.01	
SHEET TITLE	PROJECT TITLE
ACCESSIBILITY DETAILS	
DATE	SCALE DATE
12/31/2023	
DESIGNER	SCALE DATE
DATE	
12/31/2023	
SCALE	
AS SHOWN	

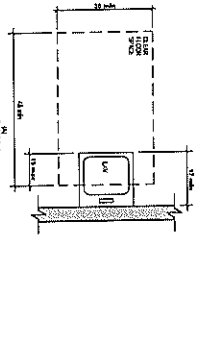


10 GRAB BAR CLEARANCES AT MOUNTING
 EXEMPT FROM SECTION 404

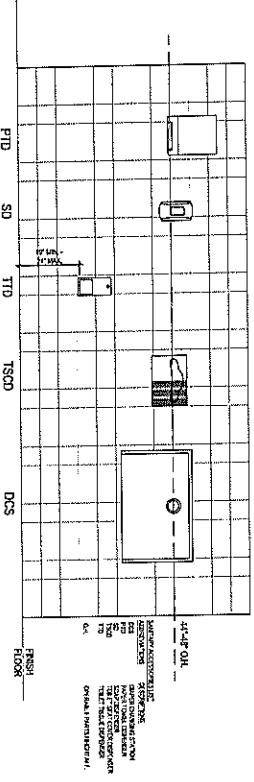
NOTES:
 1. GRAB BARS SHALL BE MOUNTED TO WALLS OR PARTITIONS AT LEAST 18 INCHES ABOVE THE FINISH FLOOR AND AT LEAST 18 INCHES BELOW THE FINISH CEILING.
 2. GRAB BARS SHALL BE MOUNTED TO WALLS OR PARTITIONS AT LEAST 12 INCHES FROM THE EDGE OF THE WALL OR PARTITION.
 3. GRAB BARS SHALL BE MOUNTED TO WALLS OR PARTITIONS AT LEAST 12 INCHES FROM THE EDGE OF THE WALL OR PARTITION.
 4. GRAB BARS SHALL BE MOUNTED TO WALLS OR PARTITIONS AT LEAST 12 INCHES FROM THE EDGE OF THE WALL OR PARTITION.



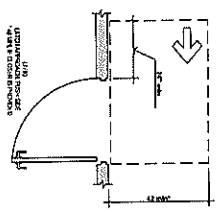
11 HEIGHT OF LAVATORIES AND SINKS
 EXEMPT FROM SECTION 404



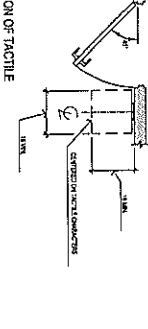
12 LAVATORY CLEAR FLOOR SPACE
 EXEMPT FROM SECTION 404



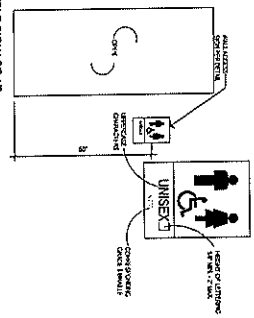
13 MOUNTING HEIGHTS
 EXEMPT FROM SECTION 404



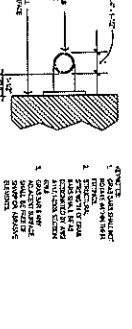
5 MANEUVERING CLEARANCE AT MANUAL SWINGING DOORS
 EXEMPT FROM SECTION 404



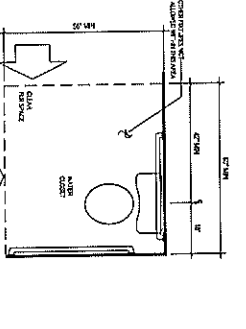
6 LOCATION OF TACTILE SIGNS AT DOORS
 EXEMPT FROM SECTION 404



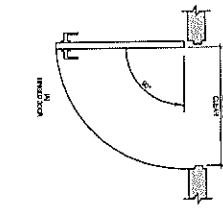
7 ACCESSIBLE SIGNAGE AT RESTROOM DOORS
 EXEMPT FROM SECTION 404



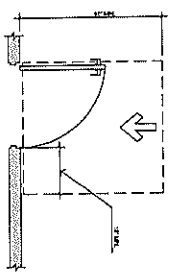
8 GRAB BAR CLEARANCES
 EXEMPT FROM SECTION 404



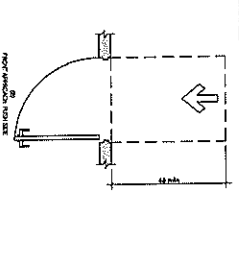
9 WATER CLOSET CLEARANCES
 EXEMPT FROM SECTION 404



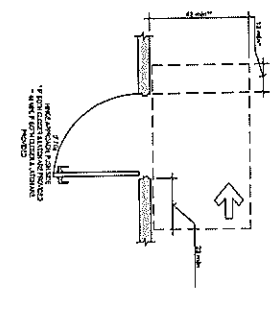
1 CLEAR WIDTH AT DOORWAYS
 EXEMPT FROM SECTION 404



2 MANEUVERING CLEARANCE AT MANUAL SWINGING DOORS FRONT APPROACH PULL SIDE
 EXEMPT FROM SECTION 404



3 MANEUVERING CLEARANCE AT MANUAL SWINGING DOORS PUSH SIDE
 EXEMPT FROM SECTION 404



4 MANEUVERING CLEARANCE AT MANUAL SWINGING DOORS
 EXEMPT FROM SECTION 404



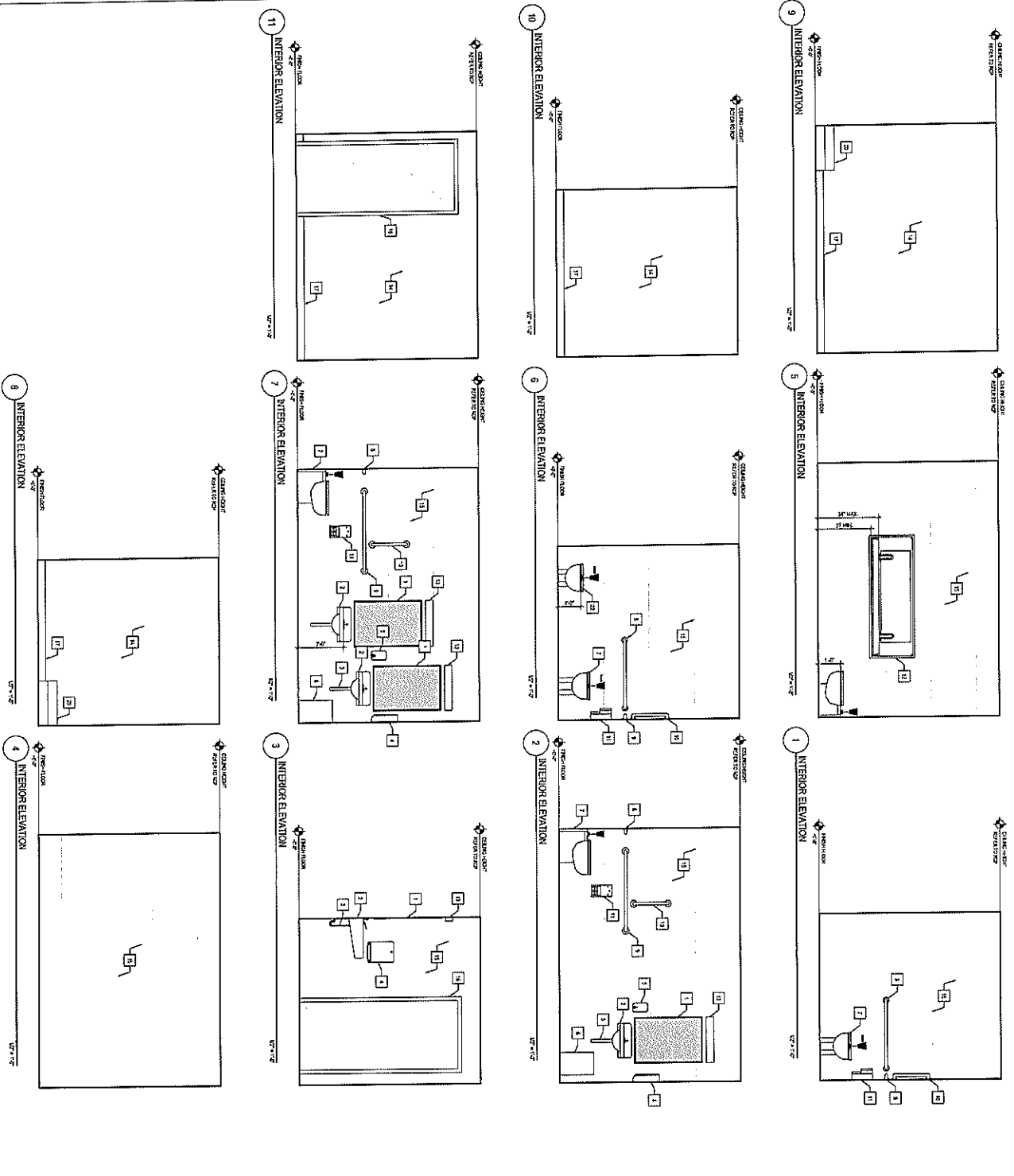
PROJECT NAME:
COMMUNITY PARK RESTROOM
 1251 HWY 95, BULLHEAD CITY, ARIZONA 86442 APN: 214-01-011

KEY NOTES:

1. SEE ALL NOTES ON SHEETS A4.01 THROUGH A4.04.
2. ALL WORK SHALL BE IN ACCORDANCE WITH THE 2015 ARIZONA BUILDING CODE.
3. ALL WORK SHALL BE IN ACCORDANCE WITH THE 2015 ARIZONA ELECTRICAL CODE.
4. ALL WORK SHALL BE IN ACCORDANCE WITH THE 2015 ARIZONA MECHANICAL CODE.
5. ALL WORK SHALL BE IN ACCORDANCE WITH THE 2015 ARIZONA PLUMBING CODE.
6. ALL WORK SHALL BE IN ACCORDANCE WITH THE 2015 ARIZONA FIRE CODE.
7. ALL WORK SHALL BE IN ACCORDANCE WITH THE 2015 ARIZONA ENERGY CODE.
8. ALL WORK SHALL BE IN ACCORDANCE WITH THE 2015 ARIZONA ACCESSIBILITY STANDARDS.
9. ALL WORK SHALL BE IN ACCORDANCE WITH THE 2015 ARIZONA ENVIRONMENTAL STANDARDS.
10. ALL WORK SHALL BE IN ACCORDANCE WITH THE 2015 ARIZONA SAFETY STANDARDS.
11. ALL WORK SHALL BE IN ACCORDANCE WITH THE 2015 ARIZONA HEALTH STANDARDS.
12. ALL WORK SHALL BE IN ACCORDANCE WITH THE 2015 ARIZONA WELFARE STANDARDS.
13. ALL WORK SHALL BE IN ACCORDANCE WITH THE 2015 ARIZONA PUBLIC UTILITIES STANDARDS.
14. ALL WORK SHALL BE IN ACCORDANCE WITH THE 2015 ARIZONA TRANSPORTATION STANDARDS.
15. ALL WORK SHALL BE IN ACCORDANCE WITH THE 2015 ARIZONA COMMUNICATIONS STANDARDS.
16. ALL WORK SHALL BE IN ACCORDANCE WITH THE 2015 ARIZONA CONSTRUCTION STANDARDS.
17. ALL WORK SHALL BE IN ACCORDANCE WITH THE 2015 ARIZONA MAINTENANCE STANDARDS.
18. ALL WORK SHALL BE IN ACCORDANCE WITH THE 2015 ARIZONA OPERATIONAL STANDARDS.
19. ALL WORK SHALL BE IN ACCORDANCE WITH THE 2015 ARIZONA FINANCIAL STANDARDS.
20. ALL WORK SHALL BE IN ACCORDANCE WITH THE 2015 ARIZONA LEGAL STANDARDS.
21. ALL WORK SHALL BE IN ACCORDANCE WITH THE 2015 ARIZONA ETHICAL STANDARDS.
22. ALL WORK SHALL BE IN ACCORDANCE WITH THE 2015 ARIZONA PROFESSIONAL STANDARDS.

GENERAL NOTES:

1. SEE ALL NOTES ON SHEETS A4.01 THROUGH A4.04.
2. ALL WORK SHALL BE IN ACCORDANCE WITH THE 2015 ARIZONA BUILDING CODE.
3. ALL WORK SHALL BE IN ACCORDANCE WITH THE 2015 ARIZONA ELECTRICAL CODE.
4. ALL WORK SHALL BE IN ACCORDANCE WITH THE 2015 ARIZONA MECHANICAL CODE.
5. ALL WORK SHALL BE IN ACCORDANCE WITH THE 2015 ARIZONA PLUMBING CODE.
6. ALL WORK SHALL BE IN ACCORDANCE WITH THE 2015 ARIZONA FIRE CODE.
7. ALL WORK SHALL BE IN ACCORDANCE WITH THE 2015 ARIZONA ENERGY CODE.
8. ALL WORK SHALL BE IN ACCORDANCE WITH THE 2015 ARIZONA ACCESSIBILITY STANDARDS.
9. ALL WORK SHALL BE IN ACCORDANCE WITH THE 2015 ARIZONA ENVIRONMENTAL STANDARDS.
10. ALL WORK SHALL BE IN ACCORDANCE WITH THE 2015 ARIZONA SAFETY STANDARDS.
11. ALL WORK SHALL BE IN ACCORDANCE WITH THE 2015 ARIZONA HEALTH STANDARDS.
12. ALL WORK SHALL BE IN ACCORDANCE WITH THE 2015 ARIZONA WELFARE STANDARDS.
13. ALL WORK SHALL BE IN ACCORDANCE WITH THE 2015 ARIZONA PUBLIC UTILITIES STANDARDS.
14. ALL WORK SHALL BE IN ACCORDANCE WITH THE 2015 ARIZONA TRANSPORTATION STANDARDS.
15. ALL WORK SHALL BE IN ACCORDANCE WITH THE 2015 ARIZONA COMMUNICATIONS STANDARDS.
16. ALL WORK SHALL BE IN ACCORDANCE WITH THE 2015 ARIZONA CONSTRUCTION STANDARDS.
17. ALL WORK SHALL BE IN ACCORDANCE WITH THE 2015 ARIZONA MAINTENANCE STANDARDS.
18. ALL WORK SHALL BE IN ACCORDANCE WITH THE 2015 ARIZONA OPERATIONAL STANDARDS.
19. ALL WORK SHALL BE IN ACCORDANCE WITH THE 2015 ARIZONA FINANCIAL STANDARDS.
20. ALL WORK SHALL BE IN ACCORDANCE WITH THE 2015 ARIZONA LEGAL STANDARDS.
21. ALL WORK SHALL BE IN ACCORDANCE WITH THE 2015 ARIZONA ETHICAL STANDARDS.
22. ALL WORK SHALL BE IN ACCORDANCE WITH THE 2015 ARIZONA PROFESSIONAL STANDARDS.



PROJECT NO.	2020
DATE	11/11/20
DESIGNER	ADAM L. VORA
SCALE	AS SHOWN
SHEET NO.	A4.01
TITLE	INTERIOR ELEVATIONS

MECHANICAL EQUIPMENT SCHEDULE

NOTE 1: ALL MECHANICAL EQUIPMENT SHALL BE APPROVED. COOLING CAPACITY INCLUDES FAN KILN.

NOTE 2: EQUIPMENT SHALL BE INSTALLED IN ACCORDANCE WITH THE FOLLOWING NOTES:

1. ALL MECHANICAL EQUIPMENT SHALL BE APPROVED BY THE LOCAL HEALTH DEPARTMENT.
2. ALL MECHANICAL EQUIPMENT SHALL BE APPROVED BY THE LOCAL HEALTH DEPARTMENT.
3. ALL MECHANICAL EQUIPMENT SHALL BE APPROVED BY THE LOCAL HEALTH DEPARTMENT.
4. ALL MECHANICAL EQUIPMENT SHALL BE APPROVED BY THE LOCAL HEALTH DEPARTMENT.
5. ALL MECHANICAL EQUIPMENT SHALL BE APPROVED BY THE LOCAL HEALTH DEPARTMENT.
6. ALL MECHANICAL EQUIPMENT SHALL BE APPROVED BY THE LOCAL HEALTH DEPARTMENT.
7. ALL MECHANICAL EQUIPMENT SHALL BE APPROVED BY THE LOCAL HEALTH DEPARTMENT.
8. ALL MECHANICAL EQUIPMENT SHALL BE APPROVED BY THE LOCAL HEALTH DEPARTMENT.
9. ALL MECHANICAL EQUIPMENT SHALL BE APPROVED BY THE LOCAL HEALTH DEPARTMENT.
10. ALL MECHANICAL EQUIPMENT SHALL BE APPROVED BY THE LOCAL HEALTH DEPARTMENT.

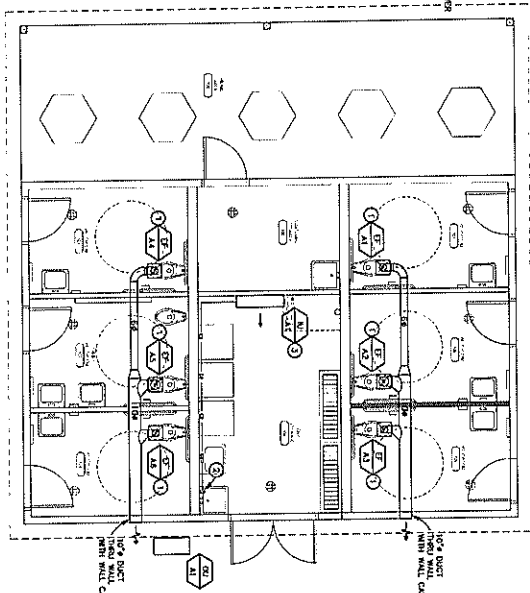
UNIT	COOLING	HEATING	REMARKS
1. WALL MOUNT MINI SPLIT	1.00	1.00	1.00
2. EXHAUST FAN - CEILING TYPE	1.00	1.00	1.00
3. SPLIT SYSTEM	1.00	1.00	1.00

KEYED NOTES:

1. EQUIPMENT SHALL BE APPROVED BY THE LOCAL HEALTH DEPARTMENT.
2. EQUIPMENT SHALL BE APPROVED BY THE LOCAL HEALTH DEPARTMENT.
3. EQUIPMENT SHALL BE APPROVED BY THE LOCAL HEALTH DEPARTMENT.
4. EQUIPMENT SHALL BE APPROVED BY THE LOCAL HEALTH DEPARTMENT.
5. EQUIPMENT SHALL BE APPROVED BY THE LOCAL HEALTH DEPARTMENT.
6. EQUIPMENT SHALL BE APPROVED BY THE LOCAL HEALTH DEPARTMENT.
7. EQUIPMENT SHALL BE APPROVED BY THE LOCAL HEALTH DEPARTMENT.
8. EQUIPMENT SHALL BE APPROVED BY THE LOCAL HEALTH DEPARTMENT.
9. EQUIPMENT SHALL BE APPROVED BY THE LOCAL HEALTH DEPARTMENT.
10. EQUIPMENT SHALL BE APPROVED BY THE LOCAL HEALTH DEPARTMENT.

GENERAL NOTES:

1. ALL MECHANICAL EQUIPMENT SHALL BE APPROVED BY THE LOCAL HEALTH DEPARTMENT.
2. ALL MECHANICAL EQUIPMENT SHALL BE APPROVED BY THE LOCAL HEALTH DEPARTMENT.
3. ALL MECHANICAL EQUIPMENT SHALL BE APPROVED BY THE LOCAL HEALTH DEPARTMENT.
4. ALL MECHANICAL EQUIPMENT SHALL BE APPROVED BY THE LOCAL HEALTH DEPARTMENT.
5. ALL MECHANICAL EQUIPMENT SHALL BE APPROVED BY THE LOCAL HEALTH DEPARTMENT.
6. ALL MECHANICAL EQUIPMENT SHALL BE APPROVED BY THE LOCAL HEALTH DEPARTMENT.
7. ALL MECHANICAL EQUIPMENT SHALL BE APPROVED BY THE LOCAL HEALTH DEPARTMENT.
8. ALL MECHANICAL EQUIPMENT SHALL BE APPROVED BY THE LOCAL HEALTH DEPARTMENT.
9. ALL MECHANICAL EQUIPMENT SHALL BE APPROVED BY THE LOCAL HEALTH DEPARTMENT.
10. ALL MECHANICAL EQUIPMENT SHALL BE APPROVED BY THE LOCAL HEALTH DEPARTMENT.



MECHANICAL FLOOR PLAN

DUCTWORK SYMBOLS

SYMBOL	DESCRIPTION
(Symbol)	1.5" DIA. 10' LG. AT EACH DOOR ONLY
(Symbol)	2.0" DIA. 10' LG. AT EACH DOOR ONLY
(Symbol)	2.5" DIA. 10' LG. AT EACH DOOR ONLY
(Symbol)	3.0" DIA. 10' LG. AT EACH DOOR ONLY
(Symbol)	3.5" DIA. 10' LG. AT EACH DOOR ONLY
(Symbol)	4.0" DIA. 10' LG. AT EACH DOOR ONLY
(Symbol)	4.5" DIA. 10' LG. AT EACH DOOR ONLY
(Symbol)	5.0" DIA. 10' LG. AT EACH DOOR ONLY
(Symbol)	5.5" DIA. 10' LG. AT EACH DOOR ONLY
(Symbol)	6.0" DIA. 10' LG. AT EACH DOOR ONLY
(Symbol)	6.5" DIA. 10' LG. AT EACH DOOR ONLY
(Symbol)	7.0" DIA. 10' LG. AT EACH DOOR ONLY
(Symbol)	7.5" DIA. 10' LG. AT EACH DOOR ONLY
(Symbol)	8.0" DIA. 10' LG. AT EACH DOOR ONLY
(Symbol)	8.5" DIA. 10' LG. AT EACH DOOR ONLY
(Symbol)	9.0" DIA. 10' LG. AT EACH DOOR ONLY
(Symbol)	9.5" DIA. 10' LG. AT EACH DOOR ONLY
(Symbol)	10.0" DIA. 10' LG. AT EACH DOOR ONLY

CONDENSATE DRAINS

UNIT	CONDENSATE DRAIN
1. WALL MOUNT MINI SPLIT	1.00
2. EXHAUST FAN - CEILING TYPE	1.00
3. SPLIT SYSTEM	1.00

MAVEN ENGINEERING
 1251 HWY 95, BULLHEAD CITY, ARIZONA 86442
 APN: 214-01-011

PROJECT NAME: **COMMUNITY PARK RESTROOM - BHC**
 1251 HWY 95, BULLHEAD CITY, ARIZONA 86442 APN: 214-01-011

DATE: 11/11/2023
 SHEET NO: **M1.01**

MECHANICAL FLOOR PLAN